

High Pressure Horizontal Multistage Pumps - 50Hz



HORIZONTAL MULTISTAGE CENTRIFUGAL PUMPS - KR SERIES

Technical Specifications

Power Range	0.37 - 4 kW / 0.5 - 5.5 HP
Version	1Ph - 230V, 50Hz AC 3Ph - 380 -415V, 50Hz AC
Speed	2900 RPM
Protection	IP 55
Insulation Class	F Class
Duty	S1 (continuous)
Direction of Rotation	Clockwise viewed from driving end
Sealing	Mechanical Seal
Max. Liquid Temperature	Std.: -15 to +70°C, High Temp.: upto 104°C
Max. Ambient Temperature	50°C
Max. Operating Pressure	10 Bar
Flow Range	upto 28m³/h
Head Range	upto 65m

Model Nomenclature

XXX - (S)(X)X / XX (X) XXX

KR - Horizontal Multistage Pumps

Materials of Construction

Std.: CI Suction & Delivery Housing
Applicable only for special construction
S= Complete SS304 Const.
N= Complete SS316 Const.
F= Fabricated SS304 Suc. & Del. Housing

Applicable only for 60Hz

Rated Flow in m³/h
2 - 2m³/h, 12 - 12m³/h

Number of Stages x 10

20: 2 Stage , 40: 4 Stage
35: 4 Stage with trimmed impeller

Horizontal Multistage Pumps

Applicable only for high Eff. Motors

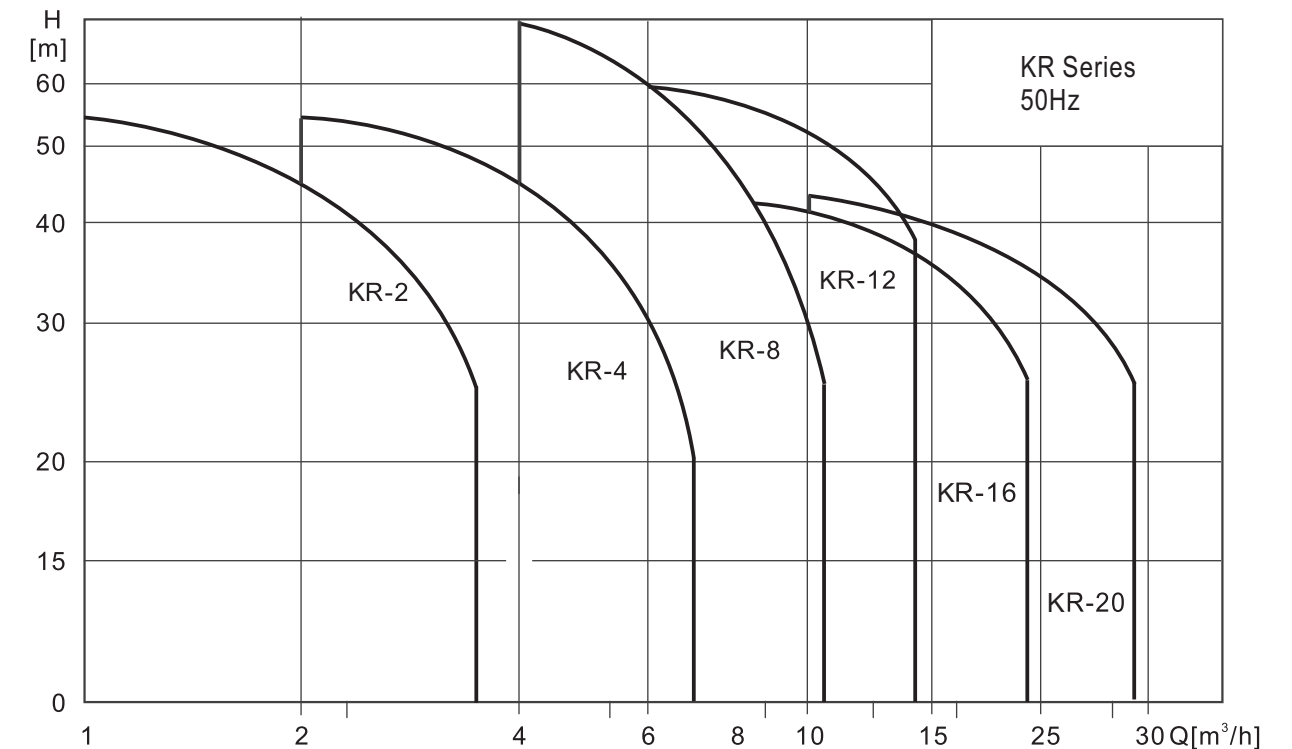
2 = IE2 Motor
3 = IE3 Motor

Voltage (Except for 1Ph 230V & 3Ph 380V)
D = 220V, K = 415V

Method of Starting

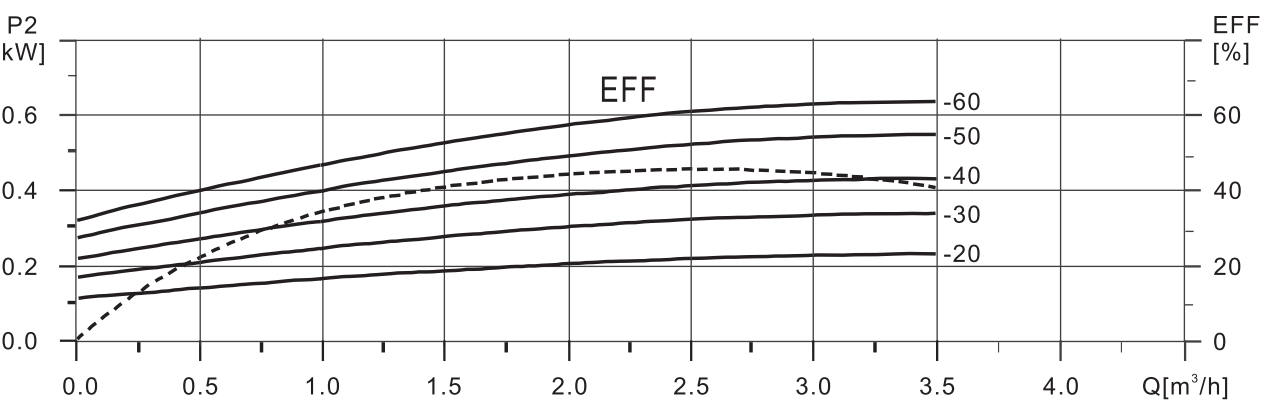
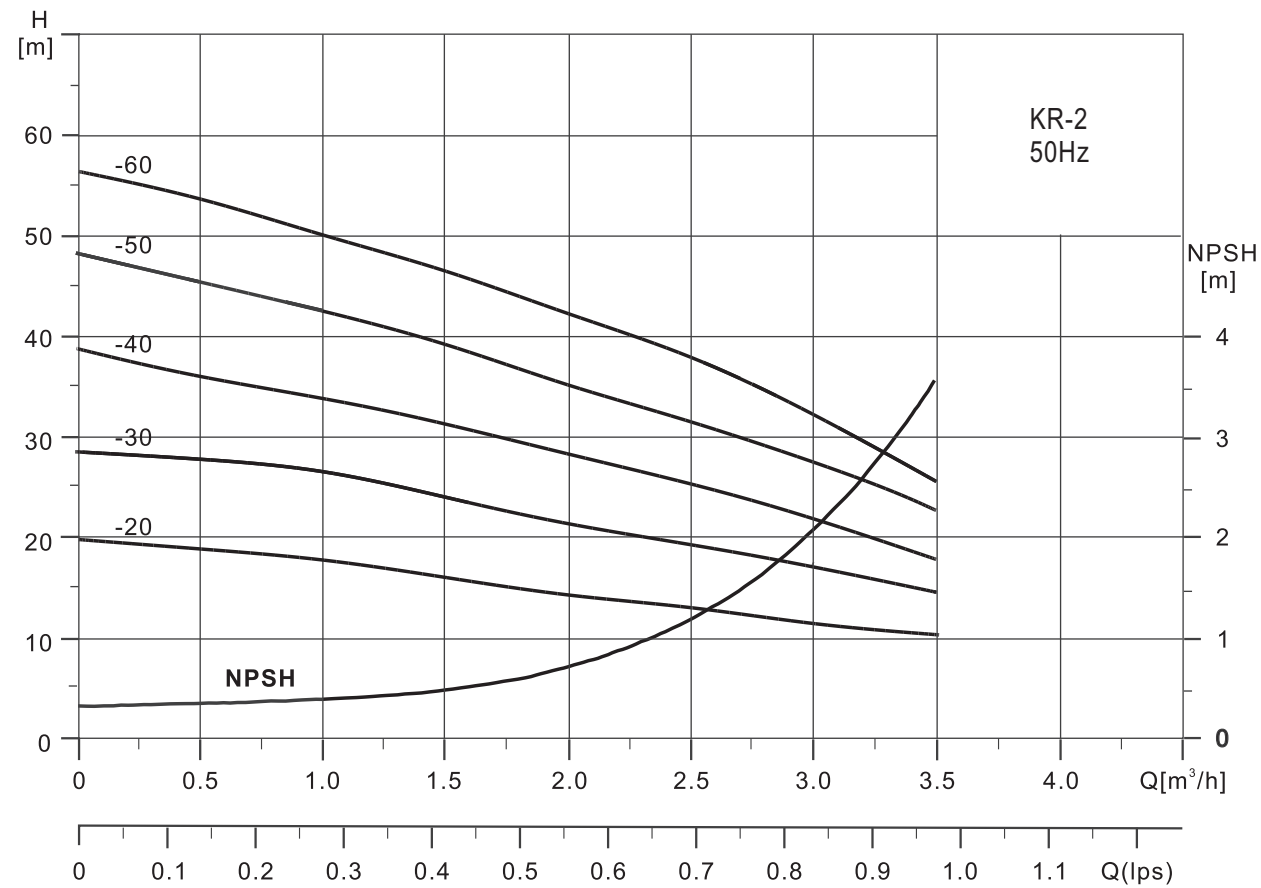
S: 1Ph - CSCR
T: 3Ph - D.O.L
D: 3Ph - S.D.

Applicable only for high flow models
B= High Flow Models



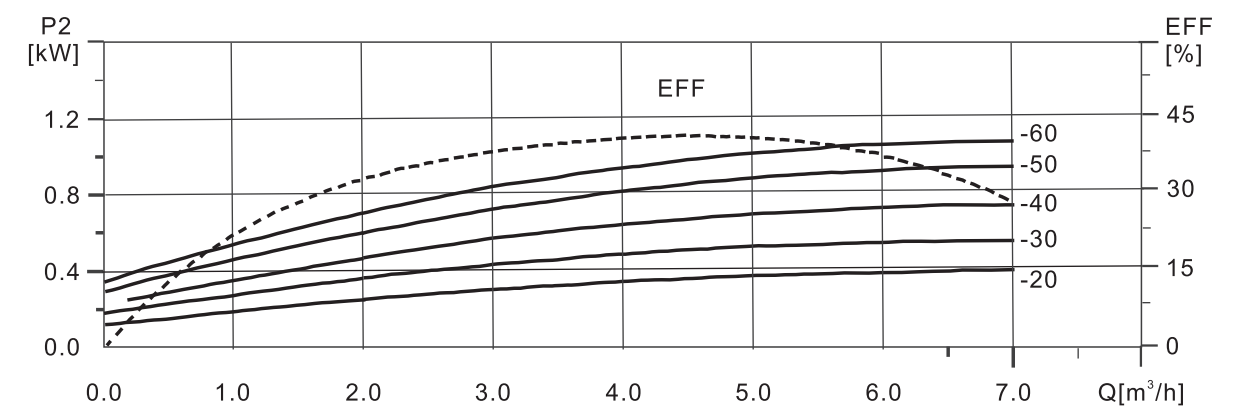
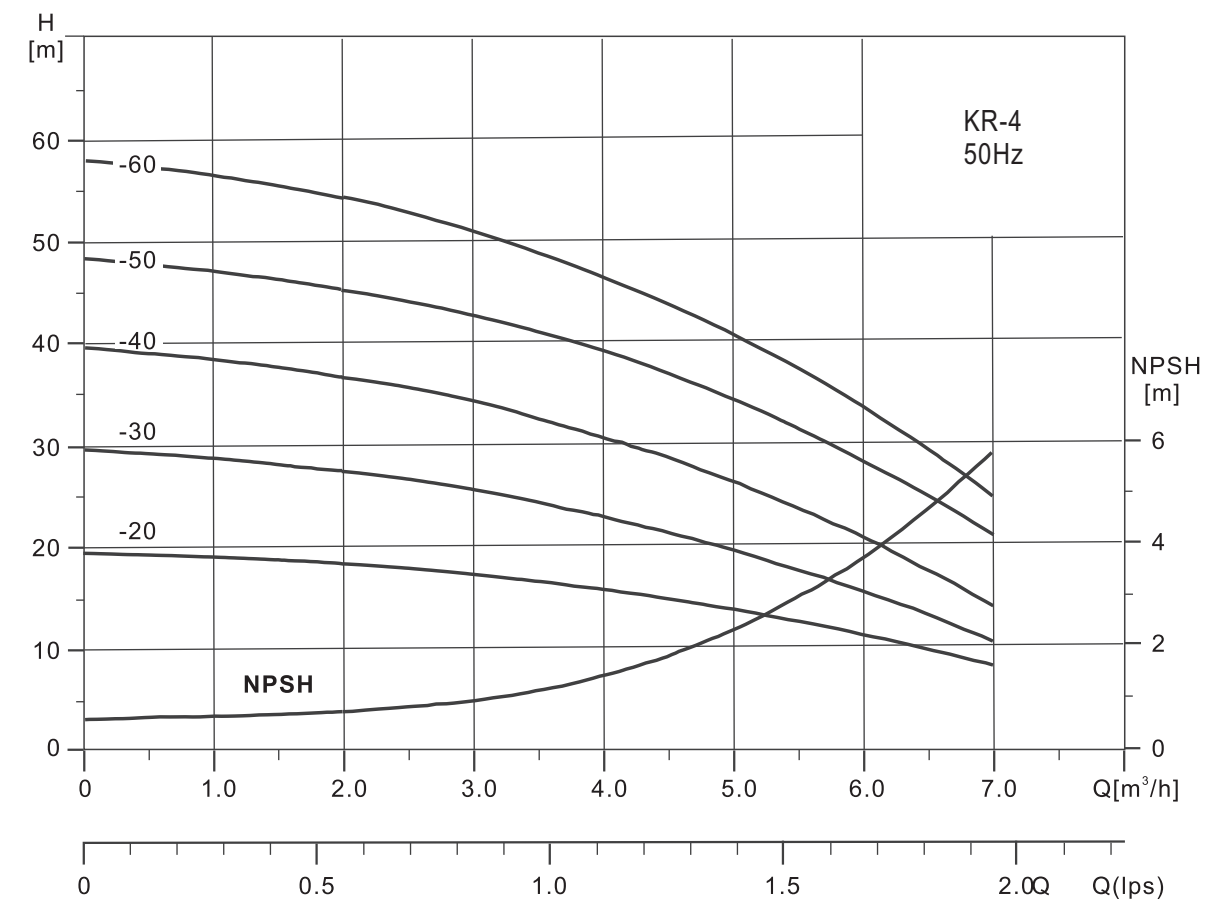
MATERIALS OF CONSTRUCTION

Part Name	KR	KRF	KRD	KRM
Pump Casing	Cast Iron	SS 304	SS 304	SS 304
Pump Head	Cast Iron	SS 304	-	SS 304
Impeller	SS 304	SS 304	SS 304	SS 304
Diffuser Casing	SS 304	SS 304	SS 304	SS 304
Pump Shaft	SS 304	SS 304	SS 304	SS 304
Bracket	Aluminum Alloy	Aluminum Alloy	Aluminum Alloy	Aluminum Alloy
Mechanical Seal	Carbon / Ceramic	Carbon / Ceramic	Carbon / Ceramic	Carbon / Ceramic
Pump Base	M.S / C.I.	M.S / C.I.	M.S / C.I.	M.S / C.T.
Sleeve	SS 304	SS 304	SS 304	SS 304
Clamp Holder	SS 304	-	SS 304	-
Clamp Plate	SS 304	-	SS 304	-



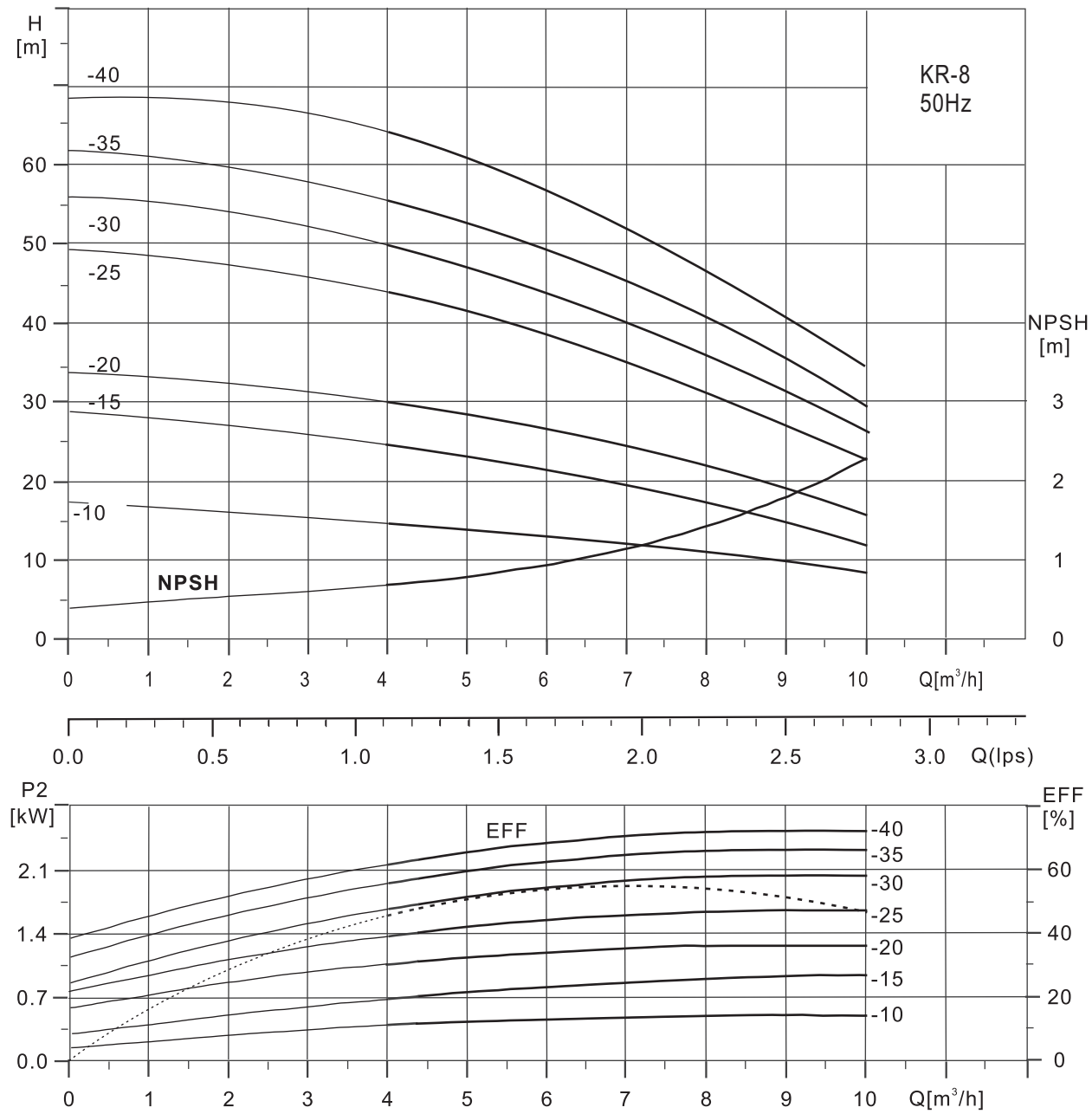
Performance Table

Model		Motor P ₂ (kW)	Q (m³/h)	1.0	1.5	2.0	2.5	3.0	3.5
Single Phase	Three Phase			H (m)					
KR-2/20S	KR-2/20T	0.37	H (m)	18	16	14	13	11	10
KR-2/30S	KR-2/30T	0.37		27	24	21	20	17	14
KR-2/40S	KR-2/40T	0.55		35	32	28	26	23	17
KR-2/50S	KR-2/50T	0.55		43	40	35	33	28	22
KR-2/60S	KR-2/60T	0.75		50	48	42	38	32	25



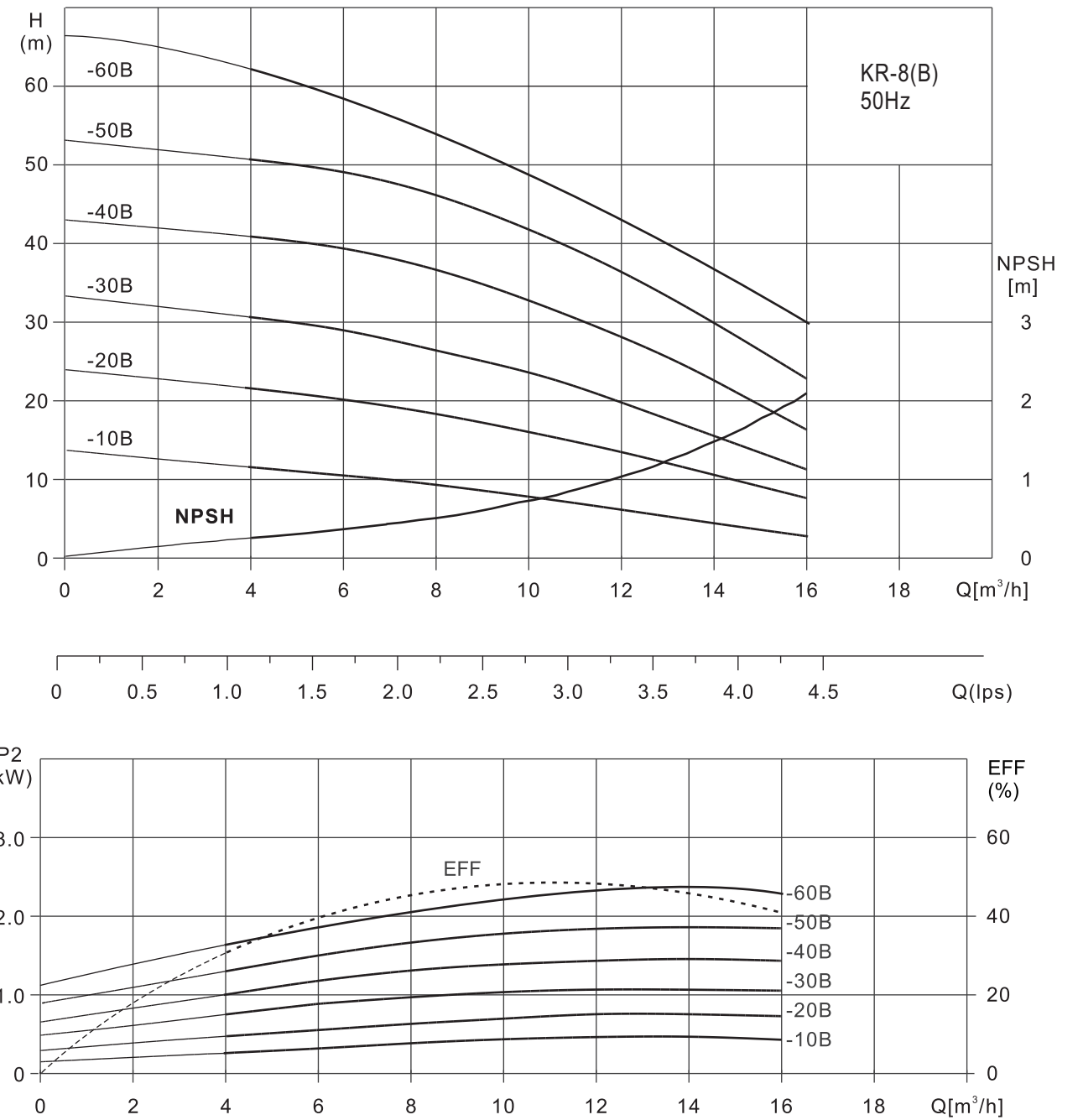
Performance Table

Model		Motor P ₂ (kW)	Q (m³/h)	2.0	3.0	4.0	5.0	6.0	7.0
Single Phase	Three Phase			H (m)					
KR-4/20S	KR-4/20T	0.55	H (m)	18	16	15	13	10	7
KR-4/30S	KR-4/30T	0.75		27	25	22	19	15	10
KR-4/40S	KR-4/40T	0.75		36	33	30	26	20	13
KR-4/50S	KR-4/50T	1.0		44	41	38	32	26	20
KR-4/60S	KR-4/60T	1.1		53	50	45	40	33	24



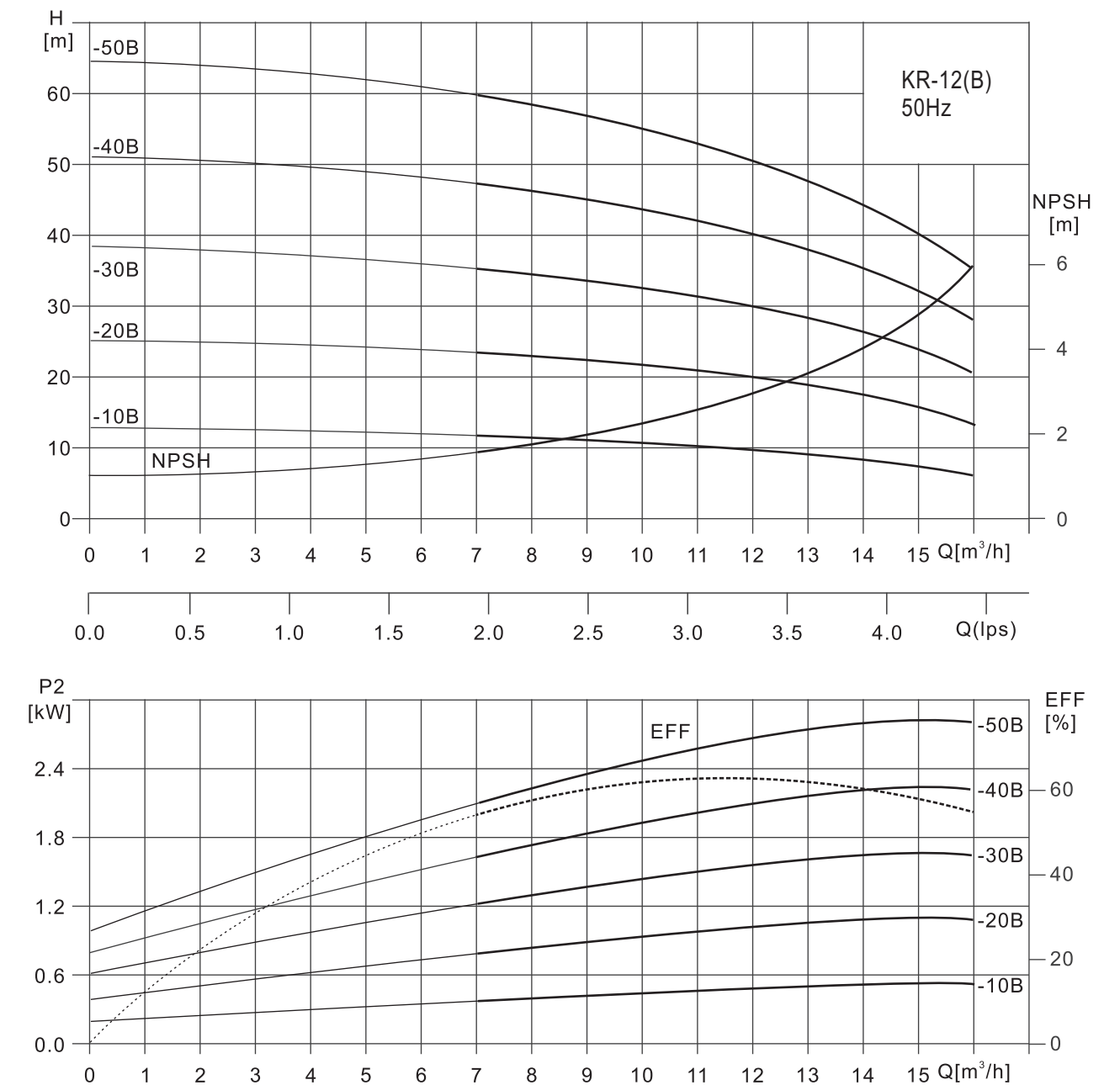
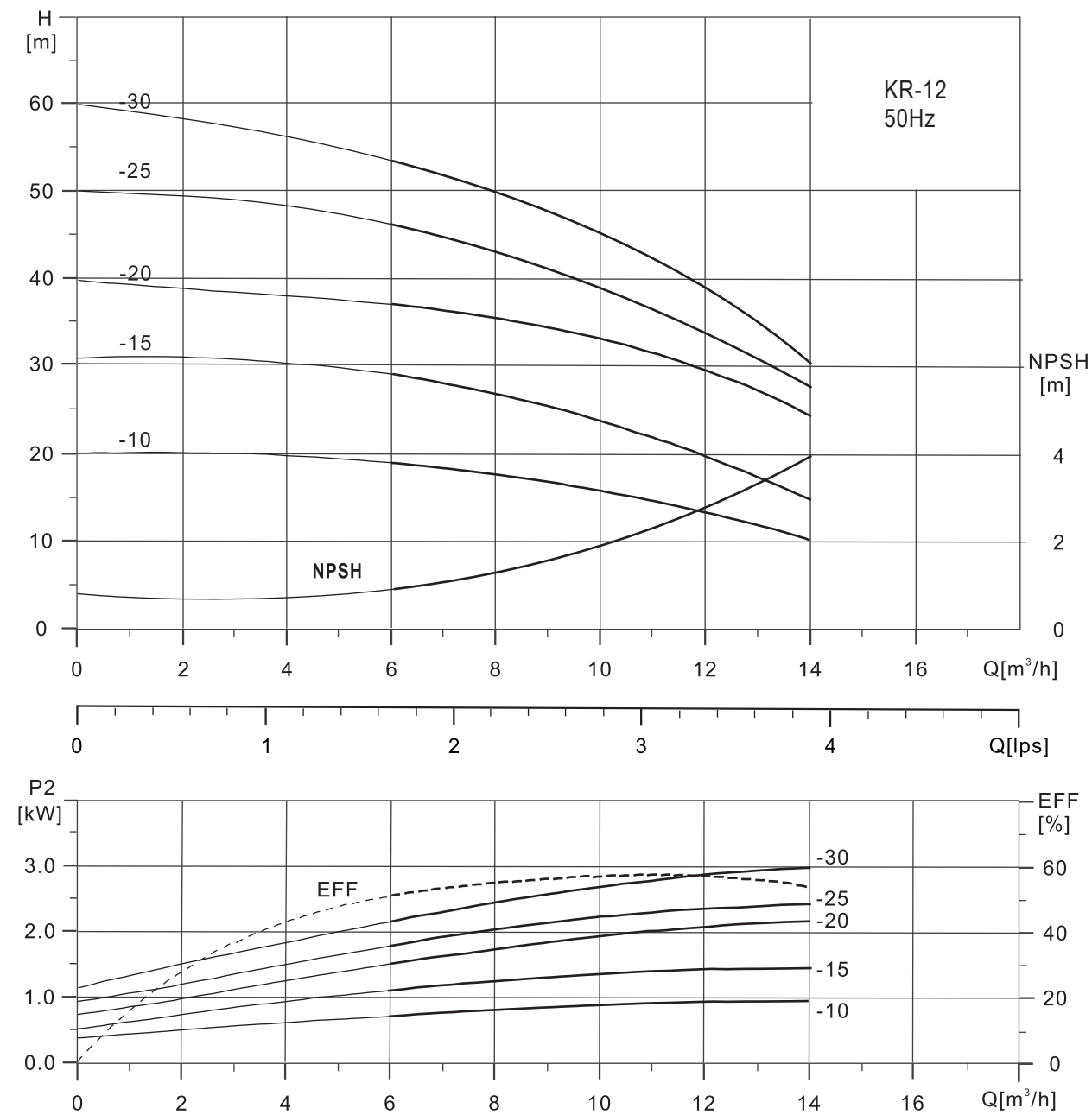
Performance Table

Model		Motor P ₂ (kW)	Q (m³/h)	4.0	5.0	6.0	7.0	8.0	9.0	10
Single Phase	Three Phase			H (m)						
KR-8/10S	KR-8/10T	0.55		15	14	13	12.5	12	9	8
KR-8/15S	KR-8/15T	0.75		25	23	22	21	20	14	12
KR-8/20S	KR-8/20T	1.0		32	29	27	25	24	21	17
KR-8/25S	KR-8/25T	1.5		43	40	38	34	27	25	20
KR-8/30S	KR-8/30T	1.85		50	46	44	40	36	30	26
KR-8/35S	KR-8/35T	2.2		56	51	48	44	43	35	28
KR-8/40S	KR-8/40T	2.2		65	57.5	57	50	48	42	34



Performance Table

Model		Motor P ₂ (kW)	Q (m³/h)	4.0	6.0	8.0	10	12	14	16
Single Phase	Three Phase			H (m)						
KR-8/10BS	KR-8/10BT	0.55		11	10	9	8	7	6	5
KR-8/20BS	KR-8/20BT	0.75		22	20	19	18	13	11	8
KR-8/30BS	KR-8/30BT	1.1		31	29	26	24	20	16	11
KR-8/40BS	KR-8/40BT	1.5		41	39	37	33	28	23	17
KR-8/50BS	KR-8/50BT	2.2		51	49	46.5	42	37	30	23
	KR-8/60BT	3.0		62	58	52	48	42	36	30

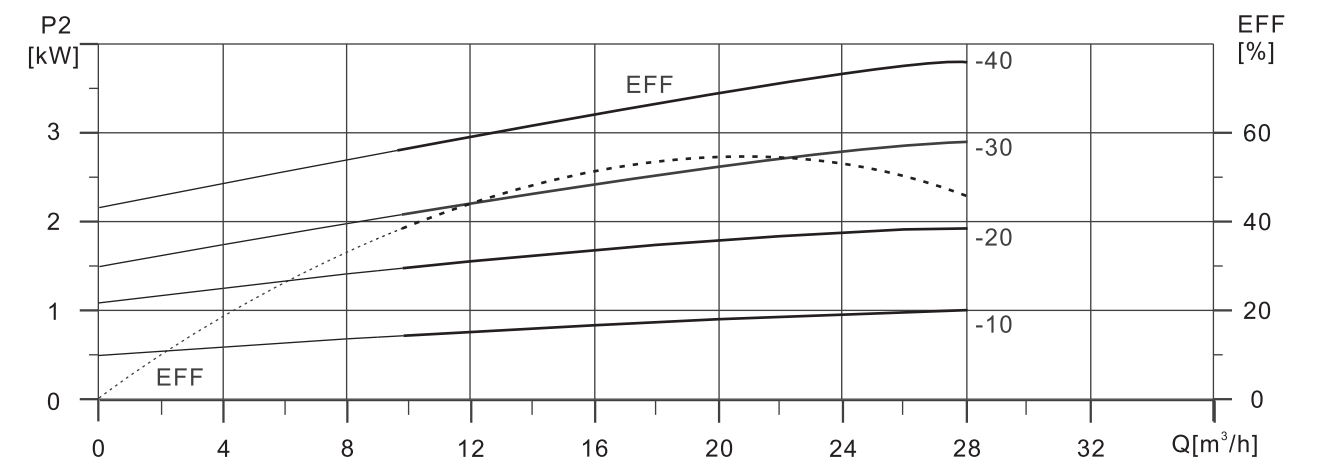
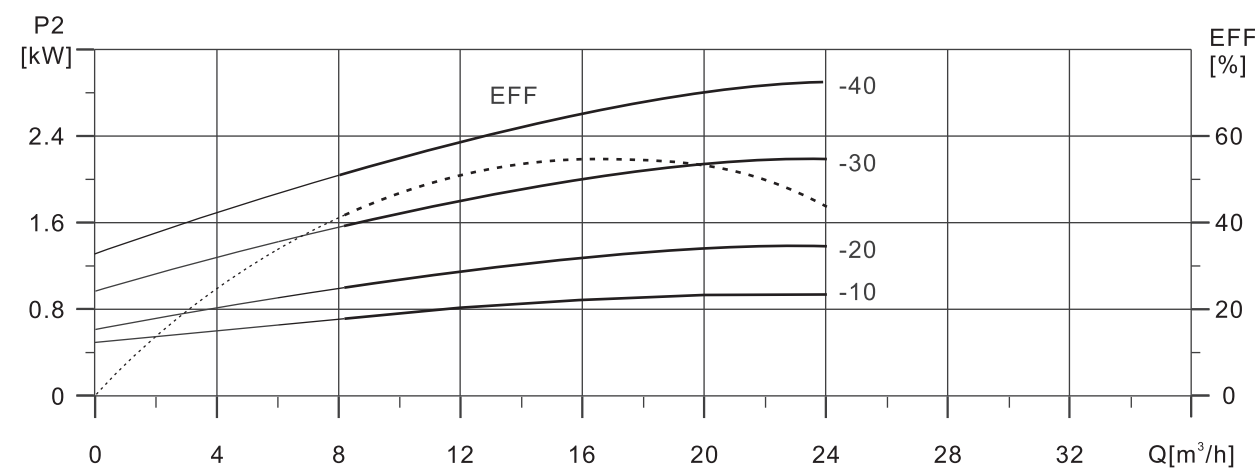
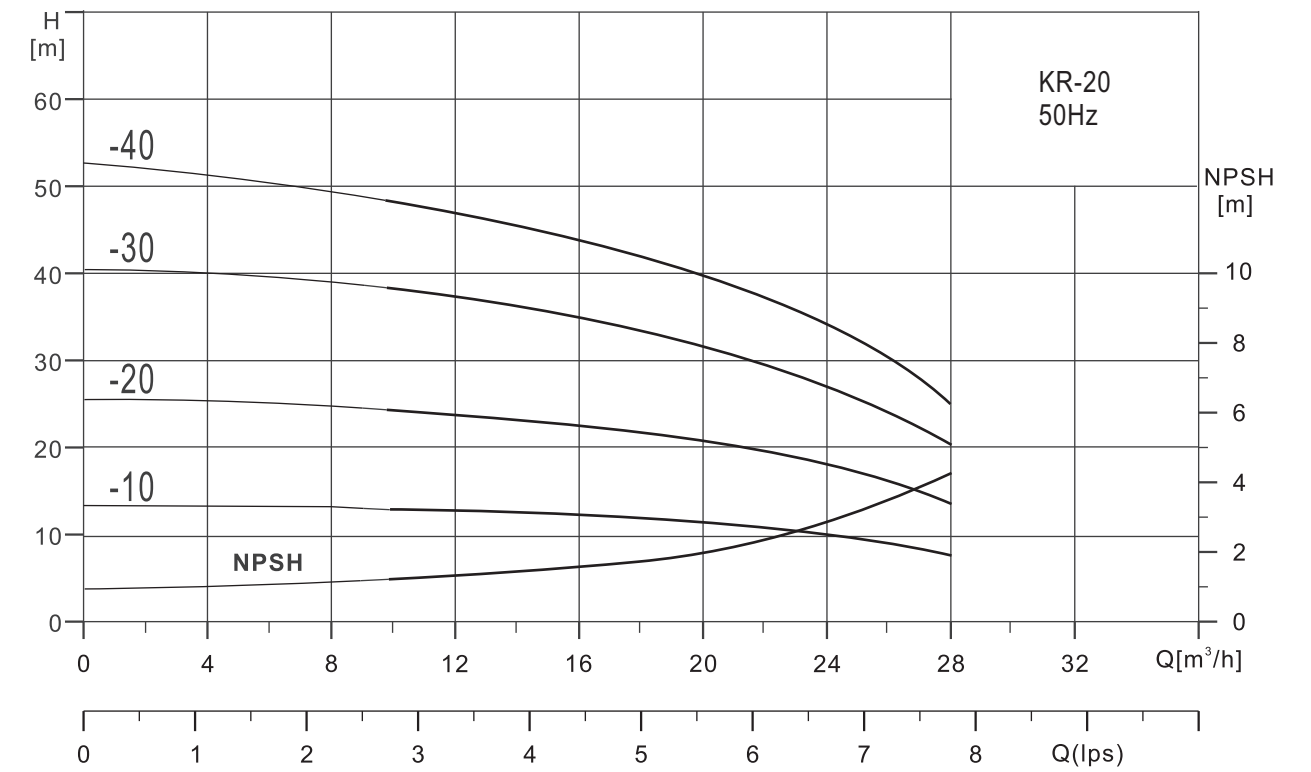
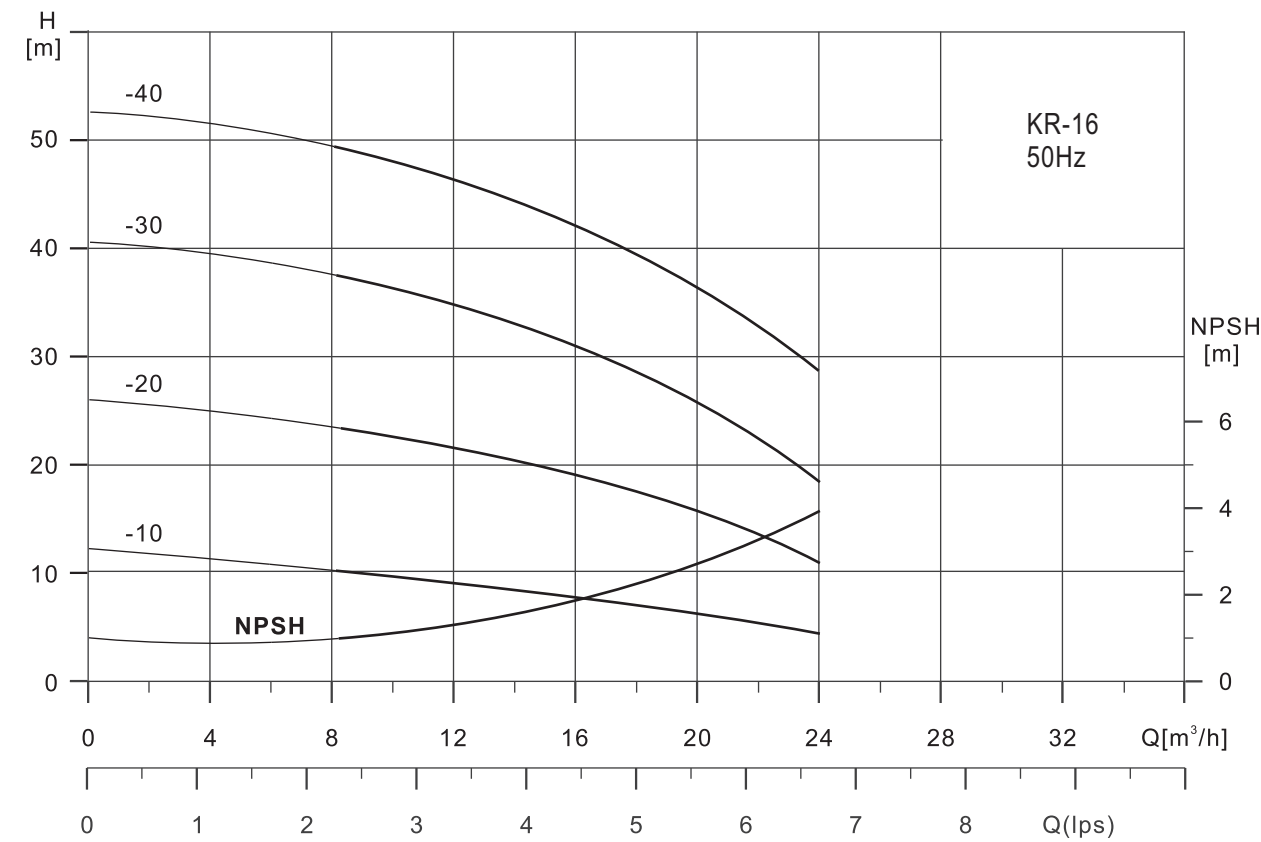


Performance Table

Model		Motor P ₂ (kW)	Q (m ³ /h)	H (m)									
Single Phase	Three Phase			6.0	7.0	8.0	9.0	10	11	12	13	14	
KR-12/10S	KR-12/10T	1.0	H (m)	19	18	17.5	16	15.5	14	13.5	12	10.5	
KR-12/15S	KR-12/15T	1.5		28	27	26	25	24	22	20	18	15	
KR-12/20S	KR-12/20T	1.85		38	36	35	32	31	29	28	24	20	
KR-12/25S	KR-12/25T	2.2		47	45	43	41.5	39	36	33.5	30.5	27	
	KR-12/30T	3.0		53.5	52	50	47.5	45	42	39	35	30	

Performance Table

Model		Motor P ₂ (kW)	Q (m ³ /h)	H (m)									
Single Phase	Three Phase			7.0	8.0	9.0	10	11	12	13	14	15	16
KR-12/10BS	KR-12/10BT	0.75	H (m)	12	11.5	11	10.5	10	9.5	9	8	7	6
KR-12/20BS	KR-12/20BT	1.1		23	22.5	22	21	20.5	19.5	18.5	17	15.5	13
KR-12/30BS	KR-12/30BT	1.85		35	34.5	33.5	32.5	31	29.5	28	26	23.5	20
KR-12/40BS	KR-12/40BT	2.2		47	46	45	43.5	41.5	39.5	37.5	35	31.5	27.5
	KR-12/50BT	3.0		60	58	56.5	55	52.5	50	47	44	40	35



Performance Table

Model		Motor P ₂ (kW)	Q (m³/h)	H (m)									
Single Phase	Three Phase			8	10	12	14	16	18	20	22	24	
KR-16/10S	KR-16/10T	1.0		12	11.5	11	10.5	10	9	8	7	6	
KR-16/20S	KR-16/20T	1.5		24	23	22	21	20	19	16	14	12	
KR-16/30S	KR-16/30T	2.2		38	36	34	33	30	28	26	23	20	
	KR-16/40T	3.0		50	48	46	44	40	38	36	32	28	

Performance Table

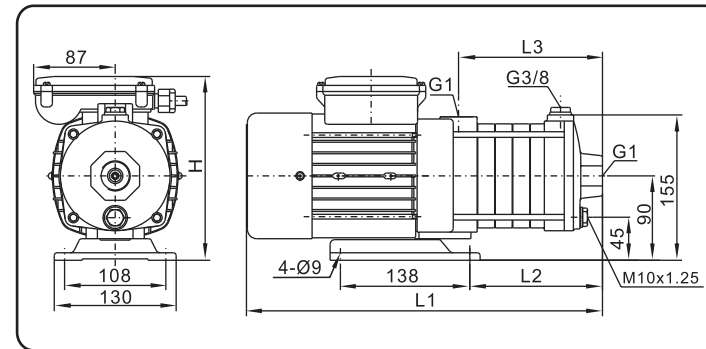
Model		Motor P ₂ (kW)	Q (m³/h)	H (m)									
Single Phase	Three Phase			10	12	14	16	18	20	22	24	26	28
KR-20/10S	KR-20/10T	1.0		13	12.5	12	11.5	11	10.5	10	9	8.5	7.5
KR-20/20S	KR-20/20T	1.85		25	24	23	22	21	20	18	16	14	12
	KR-20/30T	3.0		39	38	36	35	33	31.5	30	27	24	21
	KR-20/40T	4.0		50	48	46	44	42	40	36	32	28	24

DIMENSION & WEIGHT DETAILS

KR

DIMENSION & WEIGHT DETAILS

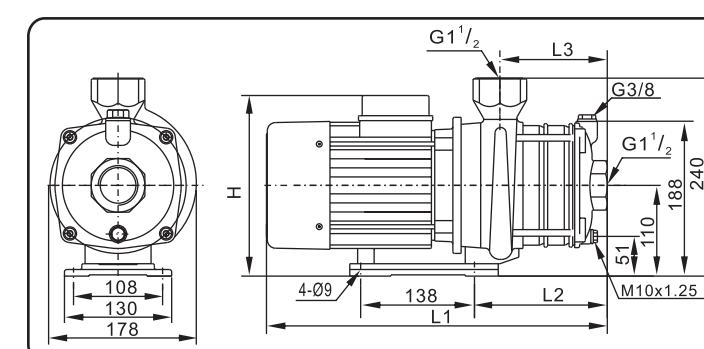
KR-2



Suc. x Del.: 1" x 1"

Model	Dimensions(mm)								Weight (kg)
	Single Phase				Three Phase				
	L1	L2	L3	H	L1	L2	L3	H	
KR-2/20S/T	326	70	104	198	326	70	104	194	8.5
KR-2/30S/T	344	88	122	198	344	88	122	194	9
KR-2/40S/T	362	106	140	198	362	106	140	194	9.5
KR-2/50S/T	380	124	158	198	380	124	158	194	10
KR-2/60S/T	398	142	176	198	398	142	176	194	10.5

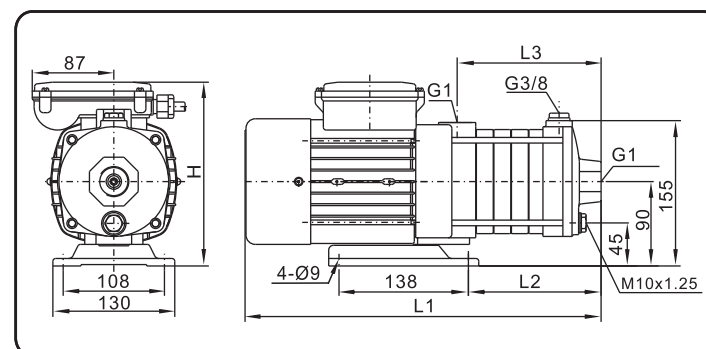
KR-12



Suc. x Del.: 1 1/2" x 1 1/2"

Model	Dimensions(mm)								Weight (kg)
	Single Phase				Three Phase				
	L1	L2	L3	H	L1	L2	L3	H	
KR-12/10S/T	328	73	78	235	328	73	78	214	15
KR-12/15S/T	395	103	108	244	395	103	108	222	18
KR-12/20S/T	436	103	108	230	395	103	108	222	20
KR-12/25S/T	468	133	138	230	426	133	138	222	24
KR-12/30S/T	-	-	-	-	485	133	138	230	27

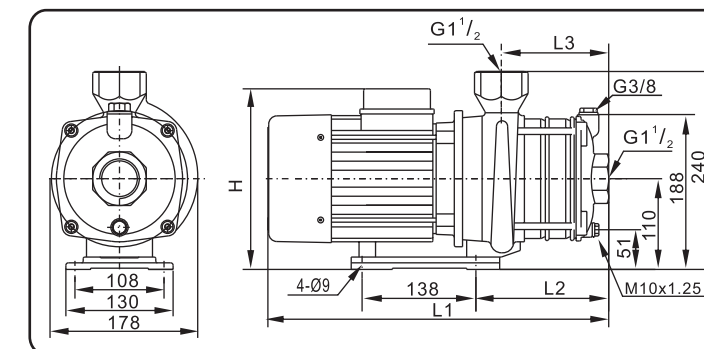
KR-4



Suc. x Del.: 1" x 1"

Model	Dimensions(mm)								Weight (kg)
	Single Phase				Three Phase				
	L1	L2	L3	H	L1	L2	L3	H	
KR-4/20S/T	335	79	113	198	335	79	113	194	9
KR-4/30S/T	362	106	140	198	362	106	140	194	10
KR-4/40S/T	389	133	167	198	389	133	167	194	10.5
KR-4/50S/T	416	160	194	198	416	160	194	194	11
KR-4/60S/T	443	187	221	198	443	187	221	194	12

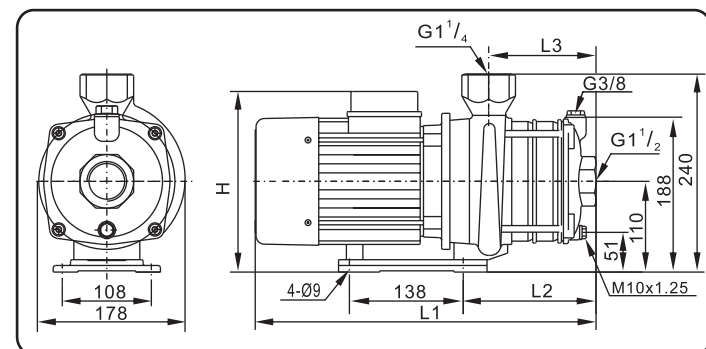
KR-12B



Suc. x Del.: 1 1/2" x 1 1/2"

Model	Dimensions(mm)								Weight (kg)
	Single Phase				Three Phase				
	L1	L2	L3	H	L1	L2	L3	H	
KR-12/10BS/T	330	73	78	237	330	73	78	216	13
KR-12/20BS/T	395	103	108	246	395	103	108	222	15
KR-12/30BS/T	467	133	138	227	425	133	138	222	26
KR-12/40BS/T	497	163	168	227	455	163	168	227	28
KR-12/50BT	-	-	-	-	544	193	198	227	31

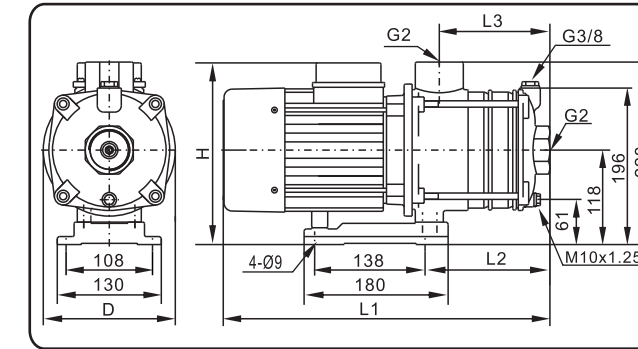
KR-8



Suc. x Del.: 1 1/2" x 1 1/4"

Model	Dimensions(mm)								Weight (kg)
	Single Phase				Three Phase				
	L1	L2	L3	H	L1	L2	L3	H	
KR-8/10S/T	328	73	78	235	328	73	78	214	13
KR-8/15S/T	358	103	108	235	358	703	108	214	15
KR-8/20S/T	358	103	108	235	358	103	108	214	18
KR-8/25S/T	426	133	138	244	426	133	138	222	20
KR-8/30S/T	468	133	138	230	426	133	138	222	25
KR-8/35S/T	500	163	168	230	456	163	168	222	30
KR-8/40S/T	500	163	168	230	456	163	168	222	31

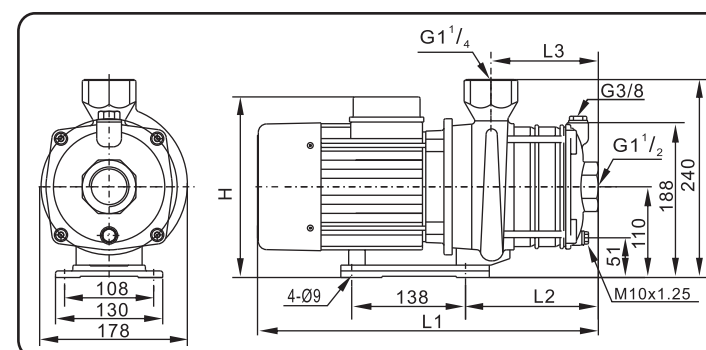
KR-16



Suc. x Del.: 2" x 2"

Model	Dimensions(mm)										Weight (kg)
	Single Phase					Three Phase					
	L1	L2	L3	H	D	L1	L2	L3	H	D	
KR-16/10S/T	325	106	81	244	165	325	106	81	218	165	14
KR-16/20S/T	406	151	126	254	165	406	151	126	228	165	20
KR-16/30S/T	493	196	171	235	176	493	196	171	235	176	27
KR-16/40T	-	-	-	-	-	555	241	216	235	176	30

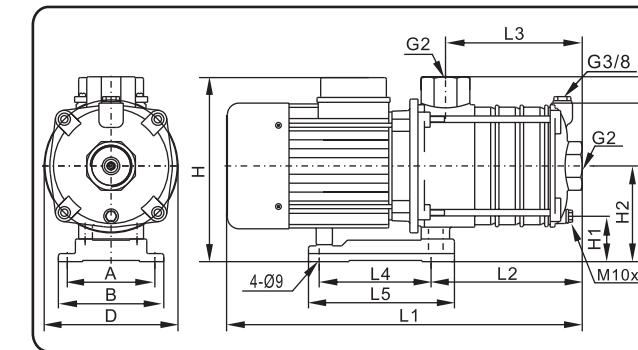
KR-8B



Suc. x Del.: 1 1/2" x 1 1/4"

Model	Dimensions(mm)								Weight (kg)
	Single Phase				Three Phase				
	L1	L2	L3	H	L1	L2	L3	H	
KR-8/10BS/T	326	73	78	237	326	73	78	216	14
KR-8/20BS/T	356	103	108	237	356	103	108	216	15
KR-8/30BS/T	416	133	138	246	416	133	138	222	19
KR-8/40BS/T	446	163	168	246	446	163	168	222	20
KR-8/50BS/T	521	193	198	227	476	193	198	222	28
KR-8/60BS/T	-	-	-	-	568	223	228	227	29

KR-20

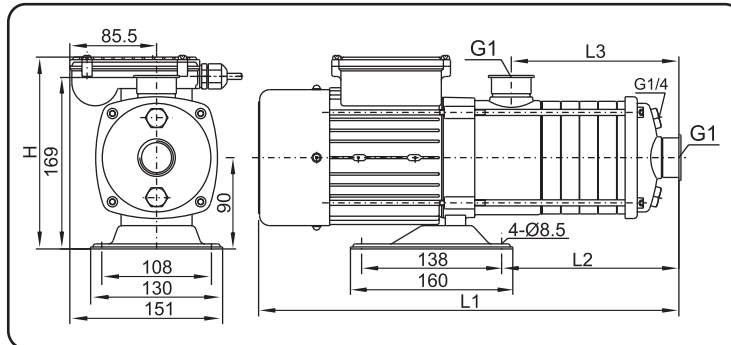


Suc. x Del.: 2" x 2"

Model	Dimensions(mm)													Weight (kg)
	Single Phase													
	L1	L2	L3	L4	L5	H	H1	H2	H3	H4	A	B	D	
KR-20/10S/T	325	106	81	138	180	244	61	118	196	228	108	130	165	16
KR-20/20S/T	450	151	126	138	180	235	61	118	196	228	108	130	176	26
KR-20/10S/T	325	106	81	138	180	218	61	118	196	228	108	130	165	15.5
KR-20/20S/T	406	151	126	138	180	228	61	118	196	228	108	130	165	25.5
KR-20/30S/T	510	196	171	138	180	235	61	118	196	228	108	130	176	30
KR-20/40T	575	316	216	140	175	248	43	100	178	210	160	200	195	35

KRF-2

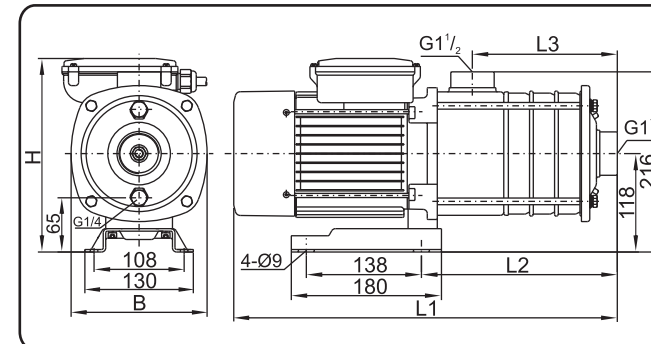
Suc. x Del.: 1" x 1"



Model	Dimensions(mm)								Weight (kg)
	Single Phase				Three Phase				
	L1	L2	L3	H	L1	L2	L3	H	
KRF-2/20S/T	342	103	92	189	342	103	92	192	7.5
KRF-2/30S/T	360	121	110	189	360	121	110	192	8
KRF-2/40S/T	378	139	128	189	378	139	128	192	9
KRF-2/50S/T	396	157	146	189	396	157	146	192	10
KRF-2/60S/T	414	175	164	189	414	175	164	192	11

KRF-12

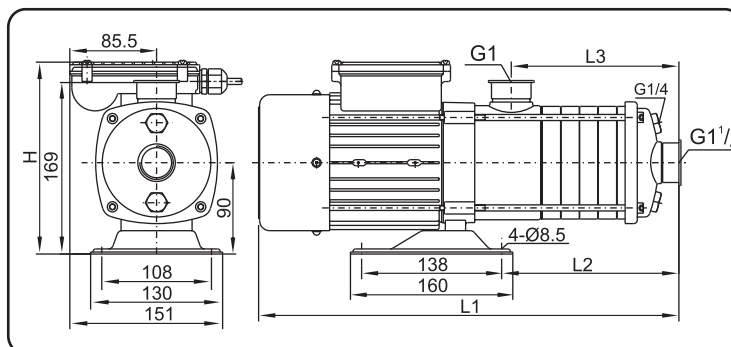
Suc. x Del.: 1 1/2" x 1 1/2"



Model	Dimensions(mm)										Weight (kg)
	Single Phase					Three Phase					
	L1	L2	L3	H	B	L1	L2	L3	H	B	
KRF-12/10S/T	340	144	83	227	163	340	144	83	220	163	14
KRF-12/15S/T	402	175	113	235	163	402	175	113	225	163	16
KRF-12/20S/T	444	175	113	262	168	444	175	113	225	163	24
KRF-12/25S/T	474	205	144	262	168	474	205	144	225	163	26
KRF-12/30T	-	-	-	-	-	494	205	144	230	168	28

KRF-4

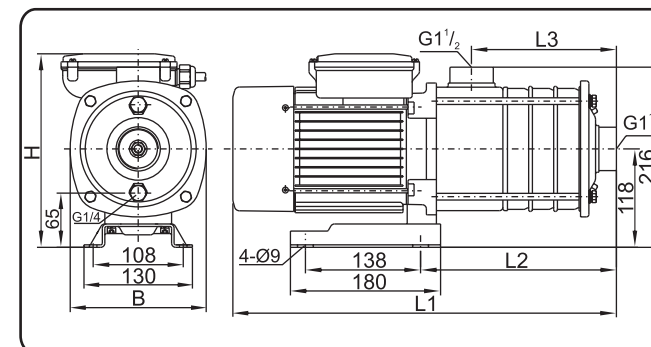
Suc. x Del.: 1 1/4" x 1"



Model	Dimensions(mm)								Weight (kg)
	Single Phase				Three Phase				
	L1	L2	L3	H	L1	L2	L3	H	
KRF-4/20S/T	342	103	92	189	342	103	92	192	9
KRF-4/30S/T	360	121	110	189	360	121	110	192	10
KRF-4/40S/T	378	139	128	189	378	139	128	192	11
KRF-4/50S/T	396	157	146	215	396	157	146	192	12
KRF-4/60S/T	414	175	164	215	414	175	164	192	13

KRF-12B

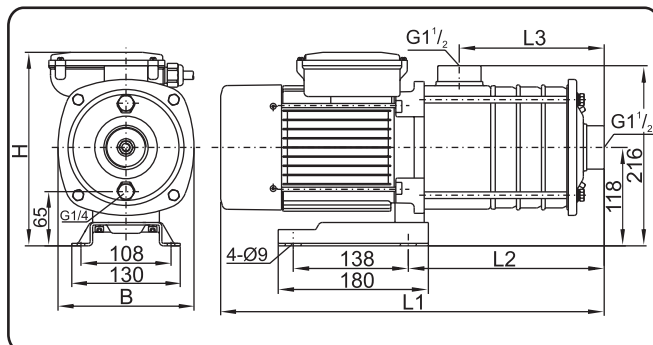
Suc. x Del.: 1 1/2" x 1 1/2"



Model	Dimensions(mm)										Weight (kg)
	Single Phase					Three Phase					
	L1	L2	L3	H	B	L1	L2	L3	H	B	
KRF-12/10BS/T	340	144	83	227	163	340	144	83	220	163	13
KRF-12/20BS/T	402	175	113	235	163	402	175	113	225	163	15
KRF-12/30BS/T	474	205	144	262	168	432	205	144	225	168	26
KRF-12/40BS/T	504	235	174	262	168	462	235	174	225	168	28
KRF-12/50BT	-	-	-	-	-	554	265	204	230	168	31

KRF-8

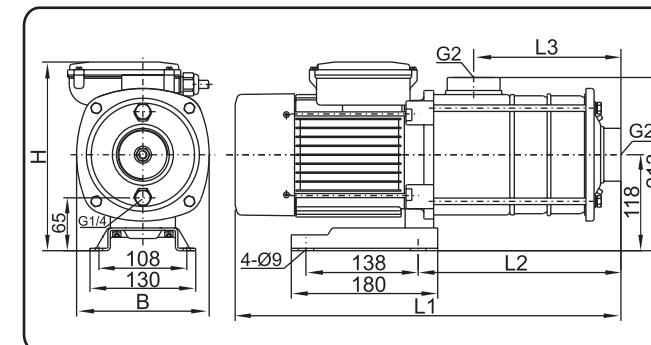
Suc. x Del.: 1 1/2" x 1 1/2"



Model	Dimensions(mm)										Weight (kg)
	Single Phase					Three Phase					
	L1	L2	L3	H	B	L1	L2	L3	H	B	
KRF-8/10S/T	340	144	83	227	163	340	144	83	220	163	13
KRF-8/15S/T	370	175	113	227	163	370	175	113	220	163	15
KRF-8/20S/T	370	175	113	227	163	370	175	113	220	163	18
KRF-8/25S/T	432	205	144	235	163	432	205	144	225	163	20
KRF-8/30S/T	474	205	144	262	168	432	205	144	225	163	25
KRF-8/35S/T	504	235	174	262	168	463	235	174	225	163	26
KRF-8/40S/T	504	235	174	262	168	463	235	174	225	163	28

KRF-16

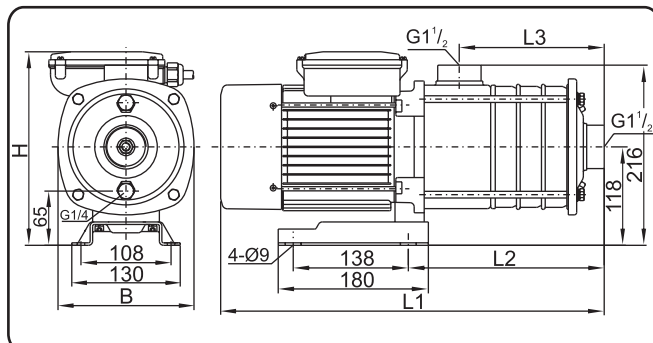
Suc. x Del.: 2" x 2"



Model	Dimensions(mm)										Weight (kg)
	Single Phase					Three Phase					
	L1	L2	L3	H	B	L1	L2	L3	H	B	
KRF-16/10S/T	354	158	90	227	163	354	158	90	220	163	13
KRF-16/20S/T	431	204	136	235	163	431	204	136	225	163	19
KRF-16/30S/T	518	249	181	262	168	518	249	181	230	168	26
KRF-16/40T	-	-	-	-	-	563	294	226	230	168	29

KRF-8B

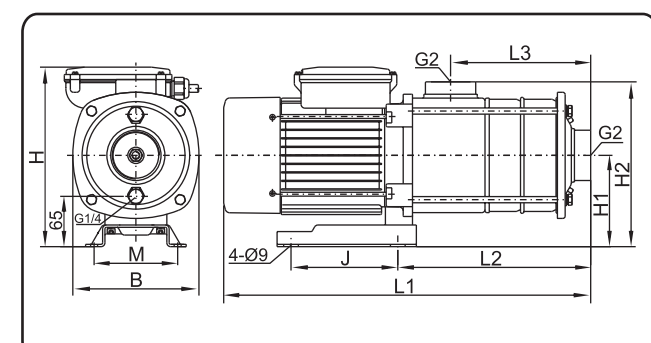
Suc. x Del.: 1 1/2" x 1 1/2"



Model	Dimensions(mm)										Weight (kg)
	Single Phase					Three Phase					
	L1	L2	L3	H	B	L1	L2	L3	H	B	
KRF-8/10BS/T	340	144	83	227	163	340	144	83	220	163	14
KRF-8/20BS/T	370	175	113	227	163	370	175	113	220	163	15
KRF-8/30BS/T	432	205	144	235	163	432	205	144	225	163	19
KRF-8/40BS/T	463	235	174	235	16	463	235	174	225	163	20
KRF-8/50BS/T	534	265	204	262	168	493	265	204	225	163	28
KRF-8/60BT	-	-	-	-	-	584	296	234	230	168	31

KRF-20

Suc. x Del.: 2" x 2"



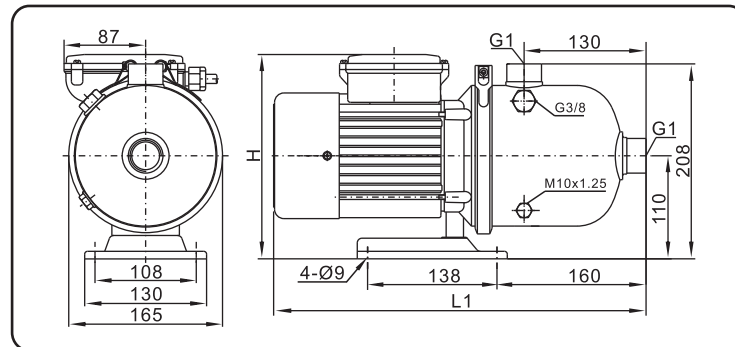
Model	Dimensions(mm)												Weight (kg)
	Single Phase					Three Phase							
	L2	L3	M	J	H1	H2	Single Phase		Three Phase				
	H	L1	B	H	L1	B							
KRF-20/10S/T	158	90	108	138	118	213	245	354	163	220	354	163	15
KRF-20/20S/T	204	136	108	138	118	213	262	472	168	225	431	163	25
KRF-20/30T	249	181	108	138	118	213	-	-	-	230	538	168	29
KRF-20/40T	338	226	190	140	132	227	-	-	-	279	602	190	34

DIMENSION & WEIGHT DETAILS

KRD



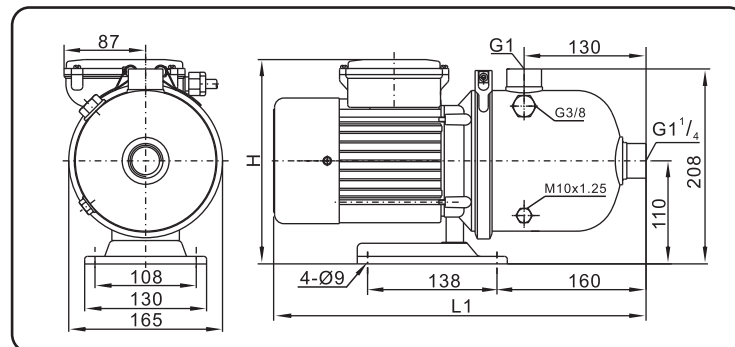
KRD-2



Suc. x Del.: 1" x 1"

Model	Dimensions(mm)				Weight (kg)
	Single Phase		Three Phase		
	L1	H	L1	H	
KRD-2/20S/T	400	217	400	214	8
KRD-2/30S/T	400	217	400	214	8.5
KRD-2/40S/T	400	217	400	214	9.5
KRD-2/50S/T	400	217	400	214	11
KRD-2/60S/T	400	217	400	214	12

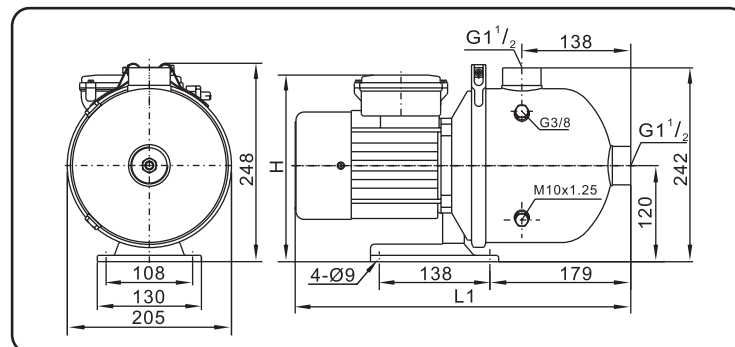
KRD-4



Suc. x Del.: 1 1/4" x 1"

Model	Dimensions(mm)				Weight (kg)
	Single Phase		Three Phase		
	L1	H	L1	H	
KRD-4/20S/T	400	217	400	214	9.7
KRD-4/30S/T	400	217	400	214	11
KRD-4/40S/T	400	217	400	214	11.5
KRD-4/50S/T	400	217	400	214	12.5
KRD-4/60S/T	400	217	400	214	13.5

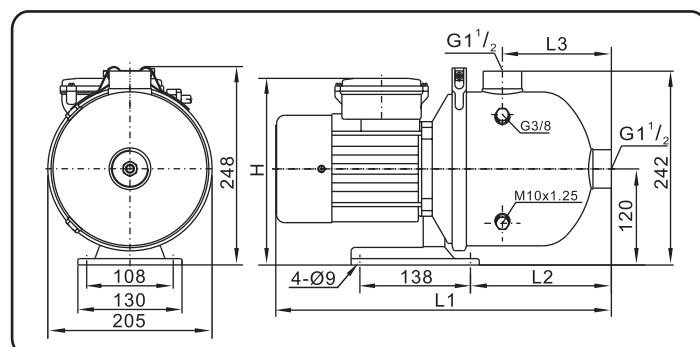
KRD-8



Suc. x Del.: 1 1/2" x 1 1/2"

Model	Dimensions(mm)				Weight (kg)
	Single Phase		Three Phase		
	L1	H	L1	H	
KRD-8/10S/T	424	227	424	222	10.5
KRD-8/15S/T	424	227	424	222	12
KRD-8/20S/T	424	227	424	222	14
KRD-8/25S/T	459	235	459	232	17
KRD-8/30S/T	500	239	459	232	21.5
KRD-8/35S/T	500	239	459	232	23
KRD-8/40S/T	500	239	459	232	24

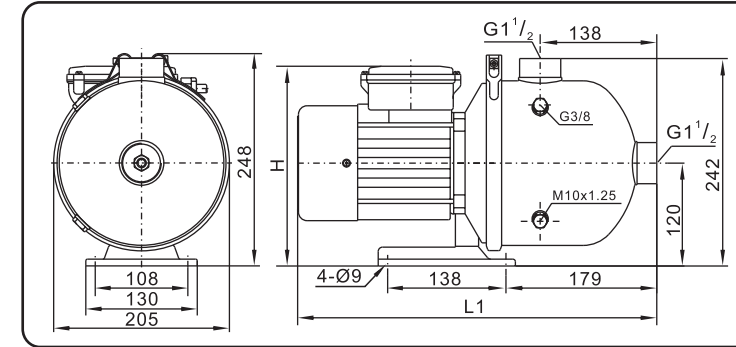
KRD-8B



Suc. x Del.: 1 1/2" x 1 1/2"

Model	Dimensions(mm)								Weight (kg)
	Single Phase				Three Phase				
	L1	L2	L3	H	L1	L2	L3	H	
KRD-8/10BS/T	425	180	139	227	425	180	139	224	10
KRD-8/20BS/T	425	180	139	227	425	180	139	224	11.5
KRD-8/30BS/T	455	180	139	235	455	180	139	232	13
KRD-8/40BS/T	455	180	139	235	455	180	139	232	16
KRD-8/50BS/T	566	246	205	239	521	246	205	232	25

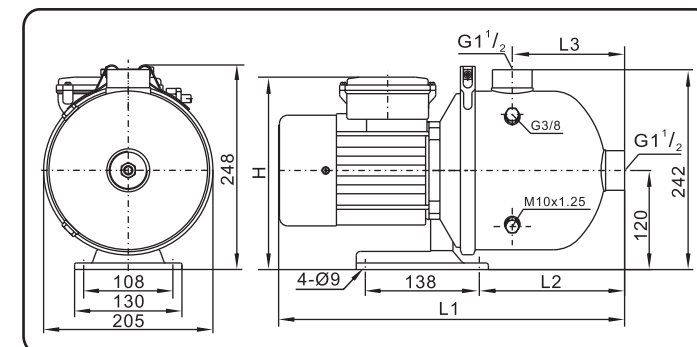
KRD-12



Suc. x Del.: 1 1/2" x 1 1/2"

Model	Dimensions(mm)				Weight (kg)
	Single Phase		Three Phase		
	L1	H	L1	H	
KRD-12/10S/T	424	227	425	222	12
KRD-12/15S/T	459	235	459	232	13.5
KRD-12/20S/T	500	239	459	232	21
KRD-12/25S/T	500	239	459	232	24
KRD-12/30T	-	-	518	239	27

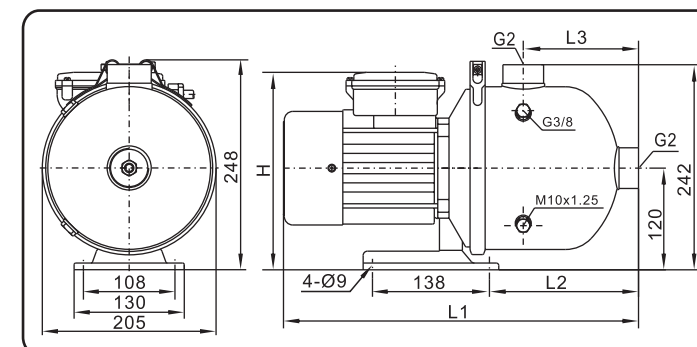
KRD-12B



Suc. x Del.: 1 1/2" x 1 1/2"

Model	Dimensions(mm)								Weight (kg)
	Single Phase				Three Phase				
	L1	L2	L3	H	L1	L2	L3	H	
KRD-12/10BS/T	425	180	139	227	425	180	139	224	11
KRD-12/20BS/T	458	180	139	235	455	180	139	232	13
KRD-12/30BS/T	500	180	139	239	455	180	139	232	23
KRD-12/40BS/T	500	180	139	239	455	180	139	232	24
KRD-12/50BT	-	-	-	-	583	246	205	239	27

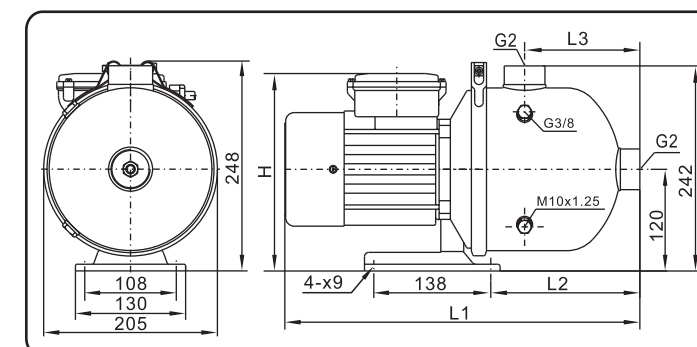
KRD-16



Suc. x Del.: 2" x 2"

Model	Dimensions(mm)								Weight (kg)
	Single Phase				Three Phase				
	L1	L2	L3	H	L1	L2	L3	H	
KRD-16/10S/T	425	175	136	245	425	175	136	224	13.5
KRD-16/20S/T	455	175	136	254	455	175	136	232	17
KRD-16/30S/T	520	201	162	239	480	201	162	232	23

KRD-20

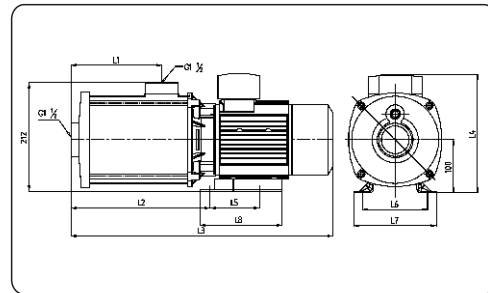


Suc. x Del.: 2" x 2"

Model	Dimensions(mm)								Weight (kg)
	Single Phase				Three Phase				
	L1	L2	L3	H	L1	L2	L3	H	
KRD-20/10S/T	425	175	136	245	425	175	136	224	20
KRD-20/20S/T	498	175	136	239	455	175	136	232	22
KRD-20/30T	-	-	-	-	540	201	162	239	25

KRM - 8

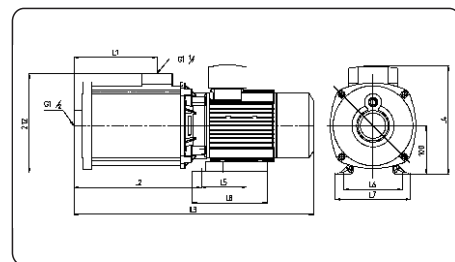
Suc. x Del.: 1½"x1½"



Model	Dimensions(mm)																Weight (kg)
	Three phase								Single phase								
	L1	L2	L3	L4	L5	L6	L7	L8	L1	L2	L3	L4	L5	L6	L7	L8	
KRM 8-10	102	200	432	225	96	126	160	160	102	200	432	225	96	126	160	160	13.3
KRM 8-20	102	200	432	225	96	126	160	160	102	200	432	225	96	126	160	160	15.3
KRM 8-30	102	200	432	225	96	126	160	160	102	200	432	225	96	126	160	160	17.4
KRM 8-40	132	230	462	225	96	126	160	160	132	230	505	245	140	160	195	170	20.4
KRM 8-60	162	260	492	225	96	126	160	160	162	260	535	245	140	160	195	170	25
KRM 8-70	192	290	565	245	140	160	195	170	192	290	565	245	140	160	195	170	25.3

KRM - 12

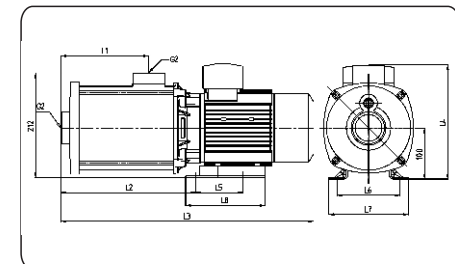
Suc. x Del.: 1½"x1½"



Model	Dimensions(mm)																Weight (kg)
	Three phase								Single phase								
	L1	L2	L3	L4	L5	L6	L7	L8	L1	L2	L3	L4	L5	L6	L7	L8	
KRM 12-10	102	200	432	225	96	126	160	160	102	200	432	225	96	126	160	160	15.3
KRM 12-20	102	200	432	225	96	126	160	160	102	200	432	225	96	126	160	160	16.9
KRM 12-30	102	200	432	225	96	126	160	160	102	200	475	245	140	160	195	170	23.1
KRM 12-40	132	230	505	245	140	160	195	170	132	230	505	245	140	160	195	170	23.9
KRM 12-50	162	260	530	245	140	160	195	170	162	260	535	245	140	160	195	170	29

KRM - 16

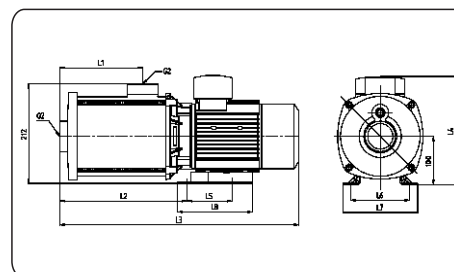
Suc. x Del.: 1½"x1½"



Model	Dimensions(mm)																Weight (kg)
	Three phase								Single phase								
	L1	L2	L3	L4	L5	L6	L7	L8	L1	L2	L3	L4	L5	L6	L7	L8	
KRM 16-10	87	185	416	225	96	126	160	160	87	185	416	225	96	126	160	160	16.3
KRM 16-20	87	185	416	225	96	126	160	160	87	185	460	245	140	160	195	170	23.3
KRM 16-30	132	230	505	245	140	160	195	170	132	230	505	245	140	160	195	170	28
KRM 16-40	177	275	550	245	140	160	195	170									

KRM - 20

Suc. x Del.: 2"x2"



Model	Dimensions(mm)																Weight (kg)
	Three phase								Single phase								
	L1	L2	L3	L4	L5	L6	L7	L8	L1	L2	L3	L4	L5	L6	L7	L8	
KRM 20-10	87	185	416	225	96	126	160	160	87	185	416	225	96	126	160	160	16.3
KRM 20-20	87	185	416	225	96	126	160	160	87	185	460	245	140	160	195	170	23.3
KRM 20-30	132	230	505	245	140	160	195	170	132	230	505	245	140	160	195	170	28
KRM 20-40	177	275	550	245	140	160	195	170									

Xstream Series is a compact, constant pressure booster pump system equipped with permanent magnet synchronous motor for water supply and pressure boosting in Residential and small commercial applications. The in-built VFD & Pressure transmitter monitors the required pressure level and regulate the pump speed to deliver constant pressure at all time. It also protects the system from dryrun, over loading unbalanced voltages, short circuit, etc.

Xstream Series Pressure booster system provides complete solution, which is Precisely built-with Pump, Motor, Pressure tank, Controller, Pressure Sensor, Pressure Gauge & Check valve

Features

- High performance insensitive speed drive technology enhances variable speed response, constant flow & pressure and reduces torque chattering.
- Higher Energy Efficiency
- Lower Power Consumption, less than 1W standby power
- Compact design
- Easy to Install and operate
- Maintains constant pressure
- Adjustable output pressure settings
- Digital display to monitor the pump speed, pressure, etc.
- Protects from dry run, over load, unbalanced voltage, short circuit.

Material of Construction

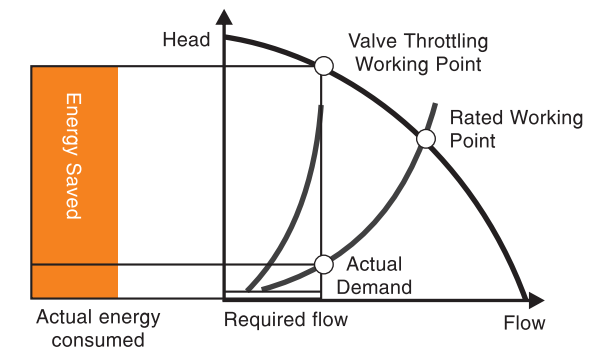
- Impeller SS304
- Diffuser SS304
- Pump body SS304
- Shaft SS304
- Mechanical Seal SiC / Graphite
- 5 way Connector SS304

Technical Details

Model	Power	Voltage/Ph	Hmax	Rated Head	Rated Flow	Max Flow	Speed	Pump Size
Xstream 204H	650W	230V - 1Ph	45m	37m	2 m³/h	4.8 m³/h	5000 rpm	1"x1"
Xstream 403	1000W	230V - 1Ph	40m	30m	4 m³/h	6.5 m³/h	3600 rpm	1½" x 1"

Specification

- Pressure setting Range 1-9 Bar
- Pressure Transmitter 24V, 4-20mA
- Ambient Temperature 0~40°C
- Liquid Temperature 0~100°C
- Head Range up to 45m
- Flow range up to 6.5
- Protection IP 54



Applications:

Domestic Water supply and pressure boosting, small buildings, Villas, Schools, Garden, etc.



403

All Wet parts are SS304



204 H

